

CB OUTDOOR
KITCHEN



Made in
Germany
50 years
experience

★★★★★

**EINZIGARTIGKEIT
TRIFFT DESIGN
UNIQUENESS MEETS DESIGN**



**HIGH QUALITY. 365 DAYS. DESIGN. CERAMIC.
MODULAR. INDIVIDUAL UNITS**



Flexible modular system



High quality materials



Ceramic worksurfaces and
side cladding



Continuous worktop without
joint*



First class devices



Limitlessly individual



Made in Germany



*Bei großen Küchenanlagen ist eine
Teilung der Arbeitsplatte notwendig.

*For large kitchen systems, it is
necessary to divide the countertop.

Ganz nach Ihren Vorstellungen

According to your
ideas



OUR FLEXIBLE MODULAR SYSTEM

The CB Outdoor Kitchen creates space for your own ideas. Due to a large selection of various high-quality modules, each outdoor kitchen can be individually designed and conceived according to your own taste and available space.



Made in
Germany
50 years
experience
★★★★★



High-quality ceramic worktops and side cladding with 12 mm thickness

For extreme resistance and durability, all CB Outdoor Kitchen countertops and side panels are made exclusively of high-quality ceramics from leading brand manufacturers. The worktop is made to measure especially for each kitchen commission. In the scope of delivery of each kitchen, the side panels are also made of ceramic. Optionally, the kitchen can also be fully covered with ceramic on the back and / or front. Ceramic surfaces are used worldwide for the highest quality and most demanding applications. In addition to the visual qualities, the unique physical properties of ceramic make it perfect for outdoor use.

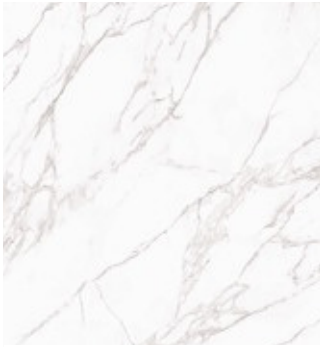
- Each ceramic countertop individually made to measure
- Ceramic sidewalls
- Back panel (6 mm) and fronts (3 mm) optionally available in ceramic



High quality ceramics from leading brand manufacturers

12 mm
STÄRKE
THICKNESS

NEOLITH



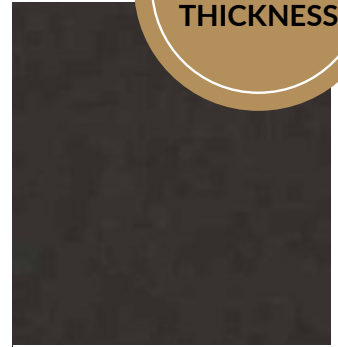
CALACATTA
silk



NEW YORK NEW YORK
silk

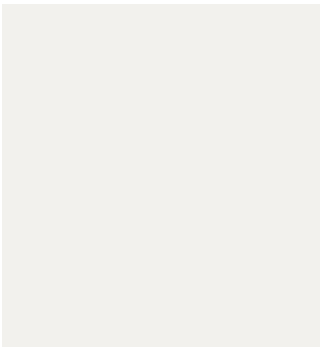


IRON CORTEN
satin



AMA BLACK
slate

DEKTON[®]
designed by COSENTINO



UYUNI
ultra matt



EDORA
ultra textur



LAURENT
ultra matt

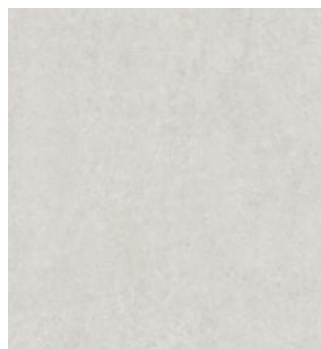


BROMO
ultra textur

Lithotech[®]
The Technical Stone



BERA
Ice Soft



BEREN
Light Grey Soft



KENDO
Light Soft Textured



BEREN
Black Soft



Kratzfest
Scratch-resistant



Eis- und frostbeständig
Ice and frost resistant



UV-beständig
UV-resistant



Hitzebeständig
Heat-resistant



Einfach zu reinigen
Easy to clean



Einfach zu desinfizieren
Easy to disinfect



Hygienisch
Hygienic



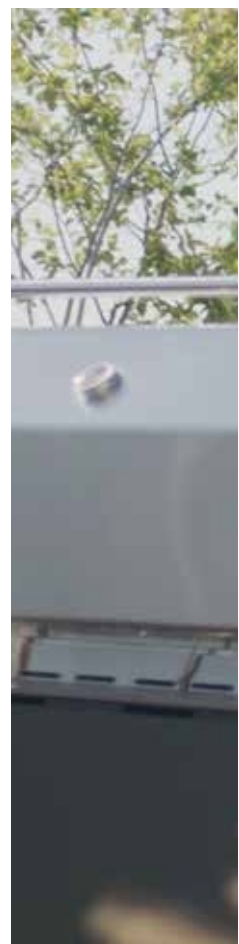
100 % natürlich
100 % natural



Wasserundurchlässig
Waterproof



Recyclbar
Recyclable

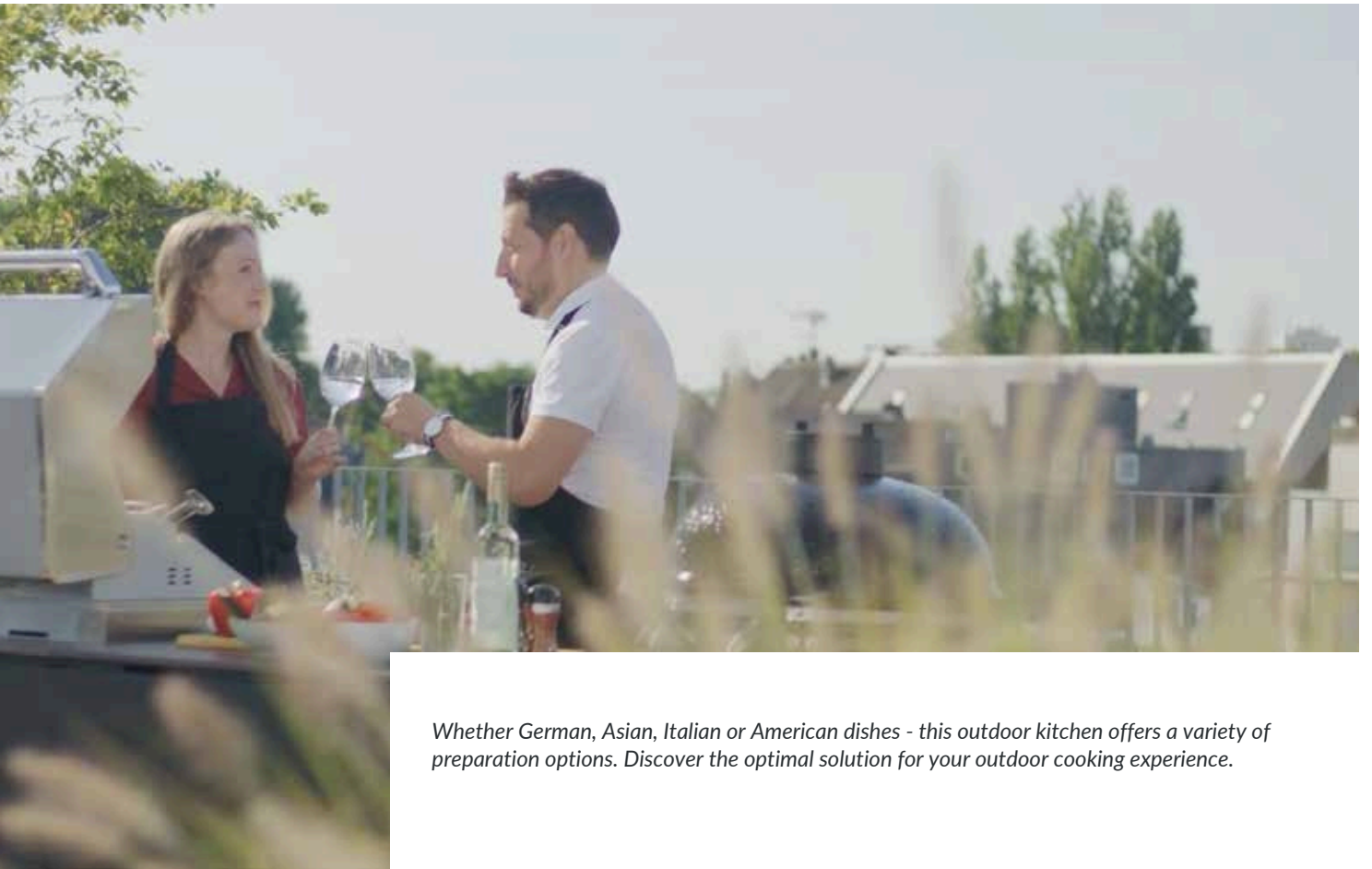


CB Outdoor Kitchen offers the highest quality and is the ideal choice for cooking enthusiasts who want to cook and grill outdoors all year round - whether on the balcony, in the garden or on the terrace.



**CB OUTDOOR
KITCHEN**





Whether German, Asian, Italian or American dishes - this outdoor kitchen offers a variety of preparation options. Discover the optimal solution for your outdoor cooking experience.

Einzigartigkeit trifft Design

Uniqueness
meets design



MONOLITH

CLASSIC PRO SERIE 2.0 INSIDE

- + Grillen, Backen, Räuchern und Garen
Grilling, baking, smoking and cooking
- + Große Grillfläche
Large grill surface
- + Smart Grid-System
Smart Grid System

Hochwertige Geräte

High quality
devices

BEEFWOLF

GAS GRILL INSIDE

- + Komplett aus Edelstahl
Completely stainless steel
- + 4/6 Hauptbrenner
4/6 Main burner
- + Infrarot Backburner (L & XL)
Infrared Backburner (L & XL)
- + Sear-Burner (XL)
- + Beleuchtete Regler
Illuminated controllers
- + Komfortzündung
Comfort ignition



**Isolierter Edelstahl-Pizzaofen mit
Schamottausmauerung**
Insulated stainless steel pizza oven with fireclay brick lining



Outdoor Feuer-Modul aus Edelstahl
Outdoor stainless steel fire module

NEOCUBE-O

LIEBHERR

FRANKE



Liebherr Kühlschrank
Liebherr refrigerator



Franke Edelstahl Becken und Armatur
Franke stainless steel sink and faucet

Geräte weiterer Hersteller wie z.B. Flammkraft oder BeefEater können ebenfalls in die CB Outdoor Kitchen integriert werden
Appliances from other manufacturers such as Flammkraft or BeefEater can also be integrated into the CB Outdoor Kitchen.

KOCHEN & GRILLEN | COOKING & GRILLING

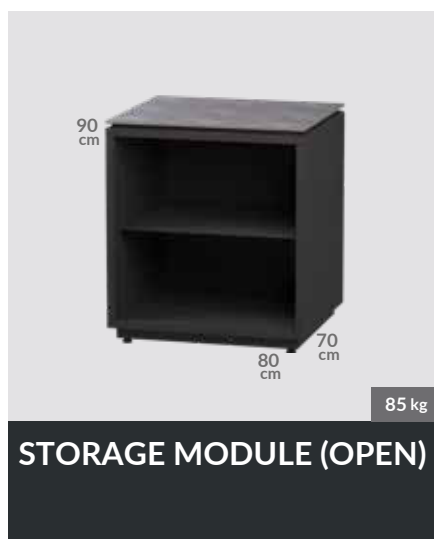
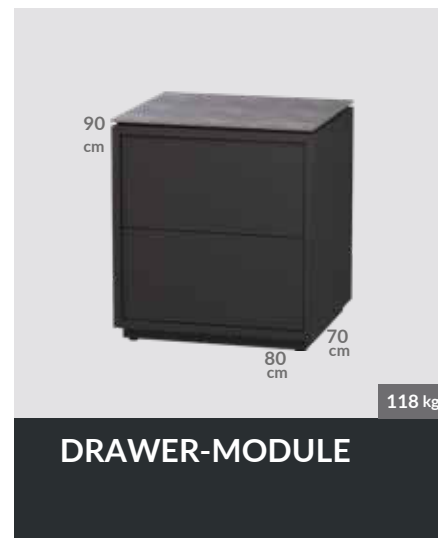


AMBIENTE | AMBIENTE



All modules at a glance

STORAGE SPACE



The weights are given in approximate values.

Devices from other brand manufacturers can be integrated

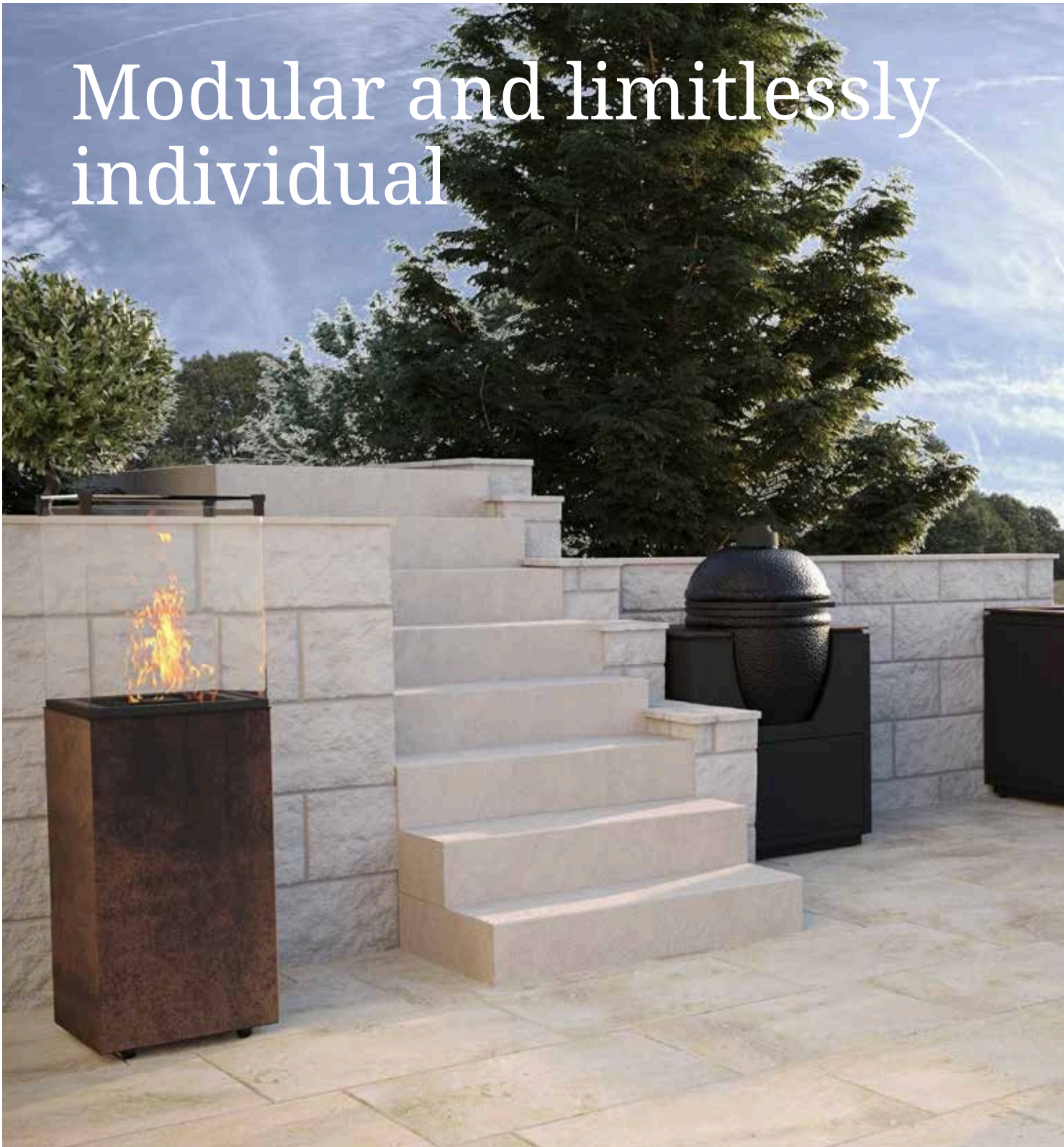
For maximum flexibility, appliances from other brand manufacturers -

e.g. Flammkraft or BeefEater - can be integrated into the CB Outdoor Kitchen modules.

Flammkraft



Modular and limitlessly individual



In der CB Küchenmanufaktur fertigen wir täglich einzigartige Küchenunikate. Für höchste Individualität und Einzigartigkeit kann jede CB Outdoor Kitchen individuell erweitert und angepasst werden.

In the CB Kitchen manufactory we produce daily unique one-of-a-kind kitchens every day. For maximum individuality and uniqueness, each CB Outdoor Kitchen can be individually expanded and customized.



Alle Bestandteile werden hierbei in den eigenen Produktionsstätten im Allgäu in höchster Industriequalität in Einzelanfertigung hergestellt. Nach der Fertigung durchlaufen diese eine aufwendige Qualitätskontrolle.

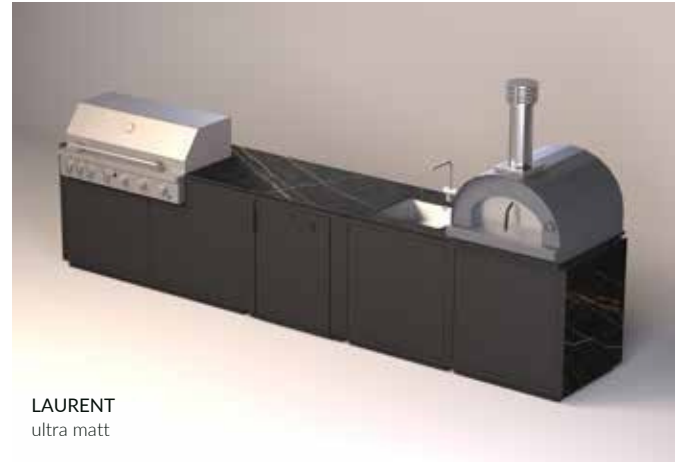
All components are manufactured individually in our own production facilities in the Allgäu region of Germany to highest industrial quality. After production, they pass through an elaborate quality control.



IRON CORTEN
satin

K1: MM | SLM | EM | SM | KM | GML | SMT

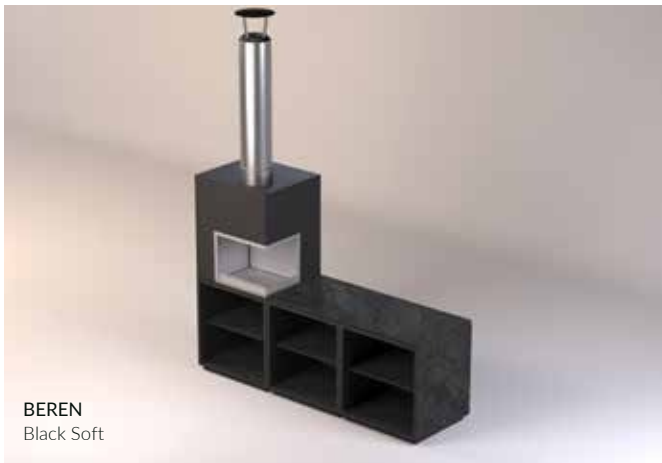
LP: 25.530 €



LAURENT
ultra matt

K2: GML | KM | SM | PMT

LP: 18.860 €



BEREN
Black Soft

K3: FSM | SMO | SMO

LP: 10.270 €



LAURENT
ultra matt

K4: GML | SMO

LP: 8.380 €



BERA
Ice Soft

K5: GMM | SMT

LP: 8.080 €



BEREN
Black Soft

K6: SMO | MM | KM | SM

LP: 14.860 €

Legende / Caption:

GMM = Gasgrill-Modul (M), GML = Gasgrill-Modul (L), GMLX = Gasgrill-Modul (XL), MM = Monolith-Modul, PMT = Pizzaofen-Modul mit Türe, PMSL = Pizzaofen-Modul mit Schublade, PMO = Pizzaofen-Modul offen, SM = Spül-Modul, KM = Kühlschrank-Modul, EM = Eck-Modul, SLM = Schubladen-Modul, SMO = Stauraum-Modul (offen), SMT = Stauraum-Modul (Tür), FM = Feuer-Modul, FSM = Feuerstellen-Modul

Popular kitchen configurations



IRON CORTEN
satin

K7: PMT | SLM | KM

LP: 12.370 €



BROMO
ultra textur

K8: SMO | GML | SMT

LP: 10.970 €



BROMO
ultra textur

K9: GMXL | SMO | KM | SM

LP: 16.360 €



KENDO
Light

K10: GMM | SMT

LP: 8.080 €

Preis ohne Frontverkleidung



UYUNI
ultra matt

K11: MM | KM | SMO

LP: 11.370 €



NEW YORK NEW YORK
silk

K12: GMM | KM | SM

LP: 12.970 €



BEREN
Light Grey Soft



CALACATTA
silk

K13: FM | SMT | PMSL | SLM | SM | EM | GMXL | KM | MM | SMO | FSM LP: 30.420 €



NEW YORK NEW YORK
silk

K15: PMO | SLM

LP: 8.180 €



IRON CORTEN
satin

K16: SLM | GMM | EM | KM | SM

LP: 17.450 €
Preis ohne Frontverkleidung



EDORA
ultra textur

K17: GML | SLM | KM | MM

LP: 17.960 €



KENDO
Light

K18: SMO | KM | GMM

LP: 11.870 €

Legende / Caption:

GMM = Gasgrill-Modul (M), GML = Gasgrill-Modul (L), GMXL = Gasgrill-Modul (XL), MM = Monolith-Modul, PMT = Pizzeria-Modul mit Türe, PMSL = Pizzeria-Modul mit Schublade, PMO = Pizzeria-Modul offen, SM = Spül-Modul, KM = Kühlschrank-Modul, EM = Eck-Modul, SLM = Schubladen-Modul, SMO = Stauraum-Modul (offen), SMT = Stauraum-Modul (Tür), FM = Feuer-Modul, FSM = Feuerstellen-Modul

Popular kitchen configurations



CALACATTA
silk

K19: MM | SLM

LP: 7.980 €
Preis ohne Frontverkleidung



IRON CORTEN
satin

K20: FSM | SMT | KM | SM | EM | SMT | MM

LP: 24.630 €



BROMO
ultra textur

K21: SM | GMM | SMO | MM | KM

LP: 20.350 €



BERA
Ice Soft

K22: KM | GML | SMT | SLM | PMT

LP: 20.950 €



EDORA
ultra textur

K23: FSM | SMO | MM | SLM | EM | SM | KM | GMXL | PMT

LP: 23.910 €



AMA BLACK
slate

K24: PMT | SLM | KM

LP: 12.370 €



CB - everything from a single source
Conception, construction, production
Metal, Ceramics, Natural Stone
Regional & Sustainable

All CB Outdoor Kitchen modules are manufactured exclusively in the CB production facilities in Allgäu (Germany). At CB Kollinger, with 50 years of experience, the complete metal processing and coating is carried out in the highest industrial quality and vertical range of manufacture. At CB-tec, the industrial processing of large ceramic materials takes place. The unique combination of high-performance industrial production with the many years of experience of our motivated employees guarantees first-class results. This unique constellation ensures the highest processing quality, great vertical range of manufacture, and seamless quality control.





We want to set an exclamation mark in terms of sustainability not only with our products,²
² neutral energy supply. This goal has almost been achieved now (2022). The heating and cooling of the administration and production is provided by a combined heat and power plant also with production. Therefore, by 2025, the Unzerhausen site should have CO₂ neutral energy supply based on a CHP² operated with biogas – a wood chip boiler and a 1000 kW PV system.





high-quality

individual





modular modular





www./outdoor-kitchens-built-in-barbecues/



Exclusively available through the certified CB Outdoor Kitchen dealer